



**EXTERNAL SWAGE  
HEAVY DUTY INDUSTRIAL  
HOSE FERRULES - FB**

**FEATURES & APPLICATIONS:**


- Use with Industrial HD Male Stems
- When used with corresponding HD Male Stems, provide a permanent end connection to rubber industrial hoses for use in the toughest applications.
- Hose applications: Tank Truck, Chemical, Mud Suction, OS&D, Oil Discharge, Frac-Tank, Water Discharge, Water Suction, Water Jetting, Hot Tar & Asphalt, Material Handling, Textile Air, Wire Air, Petroleum and Marine

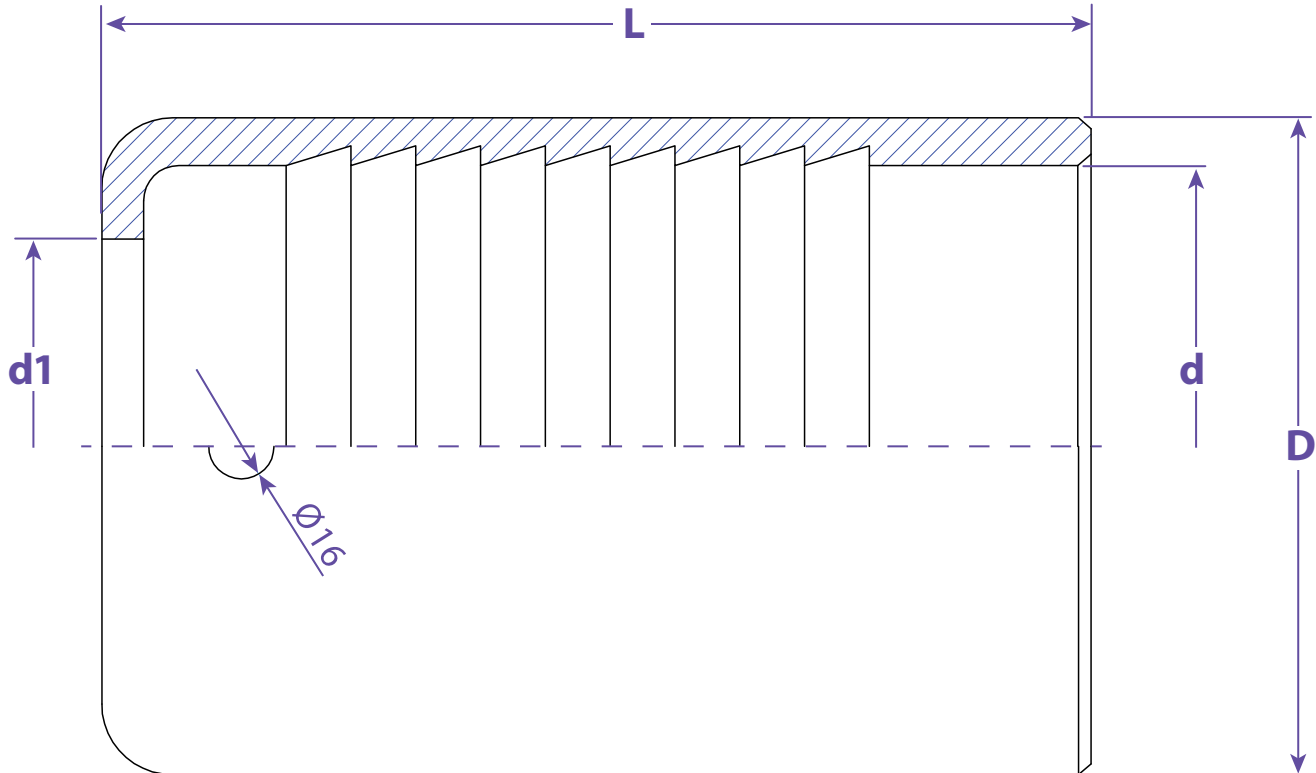


ZINC PLATED STEEL

**ZINC PLATED STEEL**

I.D.	HOSE OD SIZE RANGE	FERRULE SIZE			FWT	ZINC PLATED STEEL #
		OD	ID	LG		
2"	2-5/8" to 2-7/8"	3-1/4"	3"	3-1/2"	1/8"	HD200FB
2-1/2"	3-1/8" to 3-5/8"	4"	3-3/4"	4-1/4"	1/8"	HD250FB
3"	3-5/8" to 3-7/8"	4-1/2"	4"	5"	1/4"	HD300FB
4"	4-3/4" to 4-15/16"	5-9/16"	5-1/16"	5-1/2"	1/4"	HD400FB
5"	6" to 6-3/8"	7"	6-1/2"	6-5/8"	1/4"	HD500FB
6"	7-1/8" to 7-3/8"	8"	7-1/2"	7-1/2"	1/4"	HD600FB
8"	9-7/16" to 10-1/8"	10-3/4"	10-1/4"	8-1/2"	1/4"	HD800FB

 Information contained on this page is for general information purposes only. Seal Fast Inc. assumes no responsibility for errors or omissions for this product.



**Dimensions**

L	D	d	d1	Part #
3.5039	3.2480	3	2.4409	HD200FB
4.2520	4	3.7520	2.9528	HD250FB
5	4.5	4.0000	3.5827	HD300FB
5.5118	5.5630	5.0630	4.5669	HD400FB
6.8504	7	6.5197	5.6299	HD500FB
7.4803	8	7.5	6.7323	HD600FB
8.2677	11	10.3	8.8583	HD800FB

**TITLE HEAVY DUTY INDUSTRIAL HOSE FERRULES - FB**

**DISCLAIMER**  
All drawings and specifications are subject to change without notice. Drawings represent general dimensions of our products. Seal Fast cannot guarantee the dimensions of the part will exactly match those in the drawing. This drawing is the property of Seal Fast Inc. Copying or reproduction of this drawing is expressly prohibited.

**MATERIAL**  
  
Steel Tube

**DRAWING NOT TO SCALE**

**PART #** HD...FB

